

Contribution to the genus *Orphinus* Motschulsky, 1858 from New Guinea (Coleoptera: Dermestidae: Megatominae)

JIŘÍ HÁVA

Department of Forest Protection and Entomology, Faculty of Forestry and Wood Sciences, Czech University of Life Sciences, Kamýcká 1176, CZ-165 21, Prague 6 - Suchdol, Czech Republic; jh.dermestidae@volny.cz

Abstract: Two new species of Dermestidae are described, illustrated and compared: *Orphinus wau* sp. nov. and *Orphinus newirelandicus* sp. nov., both new species belong to the nominotypical subgenus.

Key words: Coleoptera, Dermestidae, *Orphinus*, New Guinea, taxonomy, new species.

Introduction

The presented article follows of my preceding paper about Dermestidae from New Guinea (Háva 2011; Gressitt & Hornabrook 1985) not mentioned genus *Orphinus* Motschulsky, 1858 from New Guinea. In the present article is summarized species belonged to the genus *Orphinus* known from New Guinea, with descriptions of two new species.

Material and Methods

The following measurements were made: Total length (TL) – linear distance from anterior margin of pronotum to apex of elytra. Elytral width (EW) – maximum linear transverse distance.

Abbreviations:

JHAC – Private Entomological Laboratory & Collection, Únětice u Prahy, Prague-West, Czech Republic.

Taxonomical part

Genus ***Orphinus* Motschulsky, 1858**

Subgenus ***Orphinus* s. str.**

***Orphinus biroi* Pic, 1956**

Type locality: New Guinea, Erima, Astrolabe Bay.

Material examined: 1♀ JHAC, Nieuw Guinea, Tami river, Hollandia 1930.

Distribution: Species known only from Papua New Guinea.

***Orphinus fasciatus* (Matsumura, Yokoyama, 1928)**

Material examined: 1♀ JHAC, N Guinea, Friedrich-Wilh.-hafen, 1901.

Distribution: Species known from Japan, Philippines (Luzon), Taiwan, Papua New Guinea.

***Orphinus newirelandicus* sp. nov.** (Figs 1-4)

Holotype ♀ JHAC, PNG, New Ireland Pr., Hans Meyer Range, 60 km SE Namatanai, Hirudan Riv., 04°00'41"S 152°50'79"E, 9.iii.2000, A. Weigel lgt.

Type specimen labelled with red, printed labels bearing the text as follows: HOLOTYPE *Orphinus* (*O.*) *newirelandicus* sp. nov. J. Háva det. 2012.

Derivatio nominis: Named according to the type locality.

Description: Female. Body black and reddish on dorsal surfaces, black on ventral surfaces; generally large and oval. Body TL 3.05 mm, EW 1.78 mm. Head finely punctate with long yellow pubescence. Palpi brown; pubescence on mentum denser. Eye very large with brown setae. Ocellus on front present. Antennae brown with yellow setae, 11-segmented, antennal club 2-segmented, terminal antennal segment small, circular (Fig. 2). Pronotum black discaly, reddish on lateral parts; on the disc punctate like head,



densely foveolate posteriorly, with long yellow, recumbent pubescence. Scutellum triangular without pubescence. Elytra finely punctate with long yellow, recumbent pubescence on reddish fasciae; other part of cuticle black covered by short, black pubescence (Fig. 1). Legs brown with yellow pubescence. Mesosternum coarsely punctate laterally, otherwise finely punctate, covered by yellow, long, recumbent pubescence. Abdominal sternites with long, recumbent, yellow pubescence, 10th sternite as in Fig. 3. Female genitalia (Fig. 4). Sexual dimorphism: Male is unknown. Differential diagnosis: The new species differs

from all known species by the characteristic elytral fasciae and structure of antennae, from Guinean species differs by the following characters:

- 1 Each elytron with one anterior, transverse fasciae (Fig. 1) *O. newirelandicus* sp. nov.
- Each elytron with one transverse fasciae and apical spot 2
- 2 Apical spot very large, transverse fasciae broad *O. biroi*
- Apical spot small, transverse fasciae narrow *O. fasciatus*

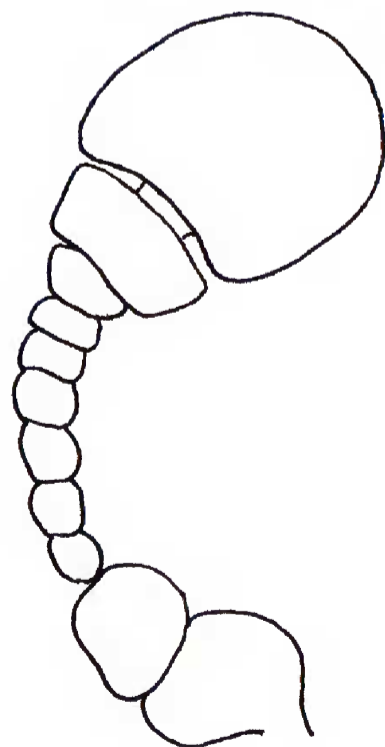
***Orphinus testaceipes* (Pic, 1915)**

Type locality: New Guinea, Stephansort, Astrolabe Bay.

Type material: Holotype ♂ MNHN, Stephansort,



1



2



3



4

Figures 1-4. *Orphinus newirelandicus* sp. nov., holotype ♀. 1 - Left elytron; 2 - Left antenna; 3 - Sternite 10; 4 - Female genitalia.



Astrolabe B., D.N. Guinea, (Kunzmann 1894) [printed label] / Type [small, yellowish, handwritten label] / *Thaumaglossa testaceipes* Pic [handwritten label] / *Orphinus* probabl [handwritten label].

Additional material studied: 1♀ JHAC, N Guinea, Stephansort, Astrolabe Bay, 1900.

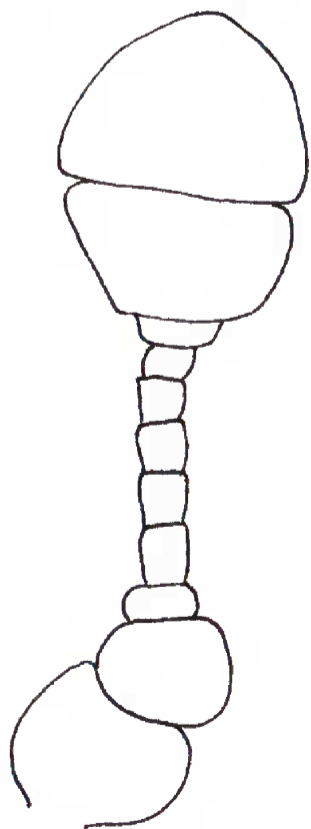
Distribution: Species known only from Papua New Guinea.

***Orphinus wau* sp. nov.** (Figs 5-6)

Holotype ♀ JHAC, Papua New Guinea, Wau, 4000 ft., 24-30.vi.1974. Type specimen was labelled with red, printed labels bearing the text as follows: HOLOTYPE



5



6

Figures 5-6. *Orphinus wau* sp. nov., holotype ♀. 5 – Left elytron; 6 – Left antenna.

Orphinus (*O.*) *wau* sp. nov. J. Háva det. 2012.

Derivatio nominis: Named according to the type locality.

Description: Female. Body black on dorsal and ventral surfaces; generally small and oval. Body TL 2.93 mm, EW 1.60 mm. Head coarsely punctate with long whitish-grey pubescence. Palpi brown; pubescence on mentum denser. Eye very large with brown setae. Ocellus on front present. Antennae dark brown with brown setae, 11-segmented, antennal club 2-segmented, terminal antennal segment small, circular (Fig. 6). Pronotum on the disc punctate like head, densely foveolate posteriorly, with long whitish-grey, erected pubescence. Scutellum triangular without whitish-grey pubescence. Elytra finely punctate with long white and brown, erected pubescence; cuticle black; each elytroum with four fasciae from whitish-grey pubescence (Fig. 5). Legs brown with short, white pubescence. Mesosternum coarsely punctate laterally, otherwise finely punctate, covered by whitish-grey, short, recumbent pubescence. Abdominal sternites with short, recumbent, whitish-grey pubescence.

Sexual dimorphism: Male is unknown.

Differential diagnosis: The new species is very similar to *O. subfasciatus* Pic, 1927 (the Philippines: Mindanao) but differs from it by the following characters:

- 1 Antennae yellowish-brown; elytral pubescence recumbent; three elytral transverse fasciae from grey pubescence narrow *O. subfasciatus*
- Antennae dark brown; elytral pubescence erected and recumbent; four elytral fasciae from whitish-grey pubescence erected and broad
- *O. wau* sp. nov.

List of *Orphinus* Motschulsky, 1858 species from New Guinea

Orphinus biroi Pic, 1956
= *Orphinus biroi* var. *seminotatus* Pic, 1956
Distribution: Papua New Guinea.

Orphinus fasciatus (Matsumura, Yokoyama, 1928)
= *Orphinus rufopictus* Kalík [unpublished name]: Háva, in Háva et Votruba, 2005
Distribution: Japan, the Philippines (Luzon), Taiwan, Papua New Guinea.



Orphinus fulvipes (Guérin-Méneville, 1838)
= *Attagenus* [?] *defectus* Walker, 1858
= *Trogoderma brasiliensis* Reitter, 1881
= *Cryptorhopalum brevicorne* Sharp, in Blackburn et
Sharp, 1885
= *Trogoderma unicolor* Kolbe, 1910
= *Orphinus ruficollis* Kalík, 1955
Distribution: Cosmopolitan species.

Orphinus newirelandicus sp. nov.
Distribution: Papua New Guinea (described in this
publication).

Orphinus testaceipes (Pic, 1915)
Distribution: Papua New Guinea.

Orphinus wau sp. nov.
Distribution: Papua New Guinea (described in this
publication).

Acknowledgements

I would like to express my thanks to Andreas Weigel (Wernburg, Germany) for passing me the interested material and to Dr. Dmitry Telnov (the Entomological Society of Latvia, Rīga) for reading the manuscript. This research was supported by the Internal Grant Agency (IGA n.20124364), Faculty of Forestry and Wood Sciences, Czech University of Life Sciences Prague.

References

- Gressitt J.L., Hornabrook R.W. 1985. *Handbook of common New Guinea Beetles*. Wau Ecology Institute, Handbook **2**: 1-87.
- Háva J. 2011. Key to species of Dermestidae (Coleoptera) recorded from the island of New Guinea: 79-82. In: Telnov D. (ed.) *Biodiversity, Biogeography and Nature Conservation in Wallacea and New Guinea*. Volume **1**. Rīga, The Entomological Society of Latvia: 434 pp, 92 pls.

